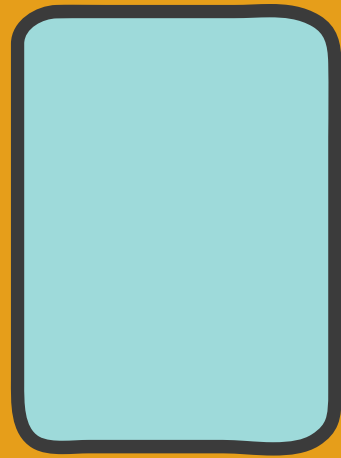
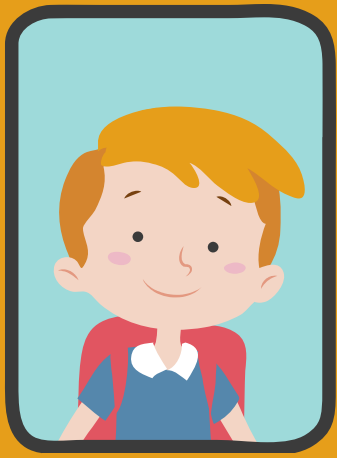
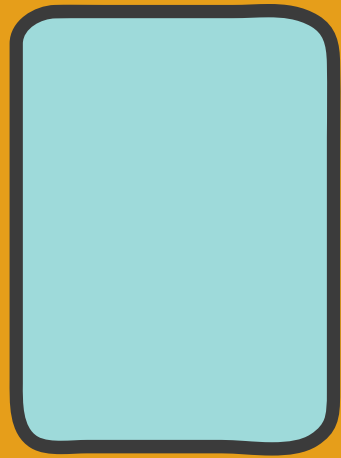


# School Bus Concerns

How These Issues Within the CCSD  
Are Compromising Student Safety





# The Issue



# The Issue: In Detail

Within the Carson City School District, there are 7,600 students being educated across 10 schools. They all have very different ways of getting to and from school:

**Bus**

**Walk**

**Bike**



**Car**

**Public Transit**



**Other**



# The Issue: Further

**14 + Staff**

## Bus Drivers

These drivers all have daily routes and will occasionally step in for drivers who are out.

**16**

## Routes

Currently, 14 of these 16 routes are covered by certified drivers.

**High School: 7:40 – 2:05**  
**Middle School: 7:45 – 2:25**  
**Elementary School: 8:30 – 3:15**

## School Hours

These all have students in school roughly for the same amount of time, but are started around the same time and released at the same time.

# Further Interpreted

## Bus Drivers

With less bus drivers, it is simple: there are less bus routes that are fulfilled and less of the city is covered. This also means that bus drivers are stretched pretty thin. With less drivers, it means there are also less drivers to cover those who are out .

## Routes

As there are 16 routes with 2 uncovered, the district is covered less than when compared to previous years. Additionally, this number of routes is a direct reflection of walking and bus zones being extended with the 22-23 school year and the lack of bus drivers. Routes in the end are also stretched just like that of drivers.

## School Hours

With the different school levels starting and ending at roughly the same time, students are needing to get to school all at the same time. That means 7,600 students are being transported across Carson City everyday at the same time. This is then less drivers and routes for each school. This also means that less students are getting to school via bus.

# The Main Issue

With all of these factors, more kids are being crammed onto busses to be able to service more and more students to and from school via this method. Bus drivers are required put 3 students to a seat regardless of what age, school level, or size. **This then means that 3 High School students are being crammed into a seat.** This works better with kindergarten students, but not with adult size high school students.



# Law and Requirements

**According to NHTSA.gov:**

- 39 Inch Seats fit 3 smaller elementary school age persons or 2 adult high school age persons.
- This site recommends “that all passengers be seated entirely within the confines of the school bus seat while the bus is in motion.

# The Science

## The site explains:

- The federal motor vehicle safety standard No. 222 “School Bus Passenger Seating and Crash Protection” requires that the interior of the bus provide protection to child occupants.
- NHTSA states, “Occupant crash protection is provided by a protective envelope consisting of strong, closely-spaced seats that have energy-absorbing seat backs.”
- Those who are not seated on the seat or partially on the seat can not be protected by this science.\*

\*\*Students aren't always sitting in the seat completely or even partially. When those sitting partially on the seat sit here, they aren't even partially on the seat and when they are, fall off after/during a turn. Students are not safe when they are not completely on the seat.

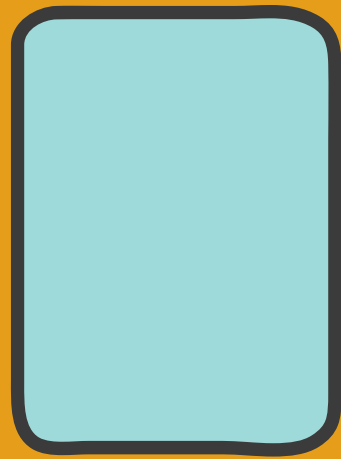
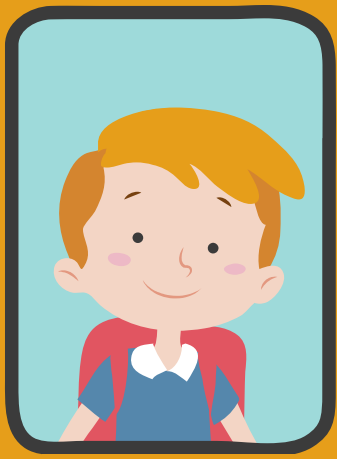
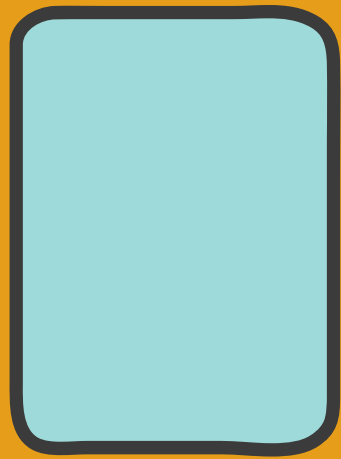






# Who Is This Impacting?

The students, throughout this presentation, are the ones who are generally being affected by this dilemma.



# Solutions

# Staggered District Start Times

As stated above, school start times are all fairly close to one another. This causes students across the district to all need to be at school at roughly the same time, which further stretches bus drivers and their routes.

With staggered start times (more time in between each school level start time), more drivers can be assigned to each school level and can change their routes to be less straining, long, and made up of so many students.

**This would look like...**

**High School:** 7:40 am - 2:05 pm (same times, no pushback)

**Middle School:** 8:00 am - 2:40 pm (pushback of 15 minutes)

**Elementary School:** 8:40 am - 3:25 pm (pushback of 10 minutes)



## Details

0

**4 Months  
23-24 School  
Year**

**Same As  
Before**

### Money

Any funding and money that was already applied to schools would just be pushed back with those start times. Nothing would change monetary wise and it wouldn't cost the district a dime.

### Time

This would hopefully be implemented in the 23-24 school year and would be approved by the CCSD board as soon as presented.

### Resources

Any resources that were used before would still be used with these new times. Nothing would change and no resources would be needed.

# Incentives/Bonuses

## Incentives:

- Provide incentives for parents/guardians and/or community members to get involved with transportation within the district.

**This can get more people involved and increase the number of bus drivers supporting our students' education.**

## Bonuses:

- Provide bonuses or pay increases to bus drivers and transportation staff that have been supporting the community for a while; to show the appreciation for them and what they do.
- Sign on bonuses for those who choose to sign a contract to be a bus driver.

**This can keep current and even new bus drivers in their position and prevent major decreases in bus driver numbers.**



## Details

**4 Months**

**23-24 School  
Year**

**\$130,000**

**\$130,000**

### Money

In Carson City, bus drivers are paid \$14.32 an hour. In the WCSD, they are paid \$10 more an hour. This number would account for paying bus drivers an extra 10 dollars an hour.

### Time

With legislature coming up in Carson City, staff are hoping to get this approved. This would hopefully be implemented into the 23-24 school year.

### Resources

The only resources would be the money that was previously addressed.



# Education/Training Benefits

## Information on Training:

-One of the many ways we can recruit more bus drivers or those who are willing is by providing information on what that training would look like and the impact the job would have on one's family.

-This can be done through community outreach articles and emails, but also spoke about at community outreach events.

-Ideally, this message would be spread to parents, guardians, and family of students within the district. Additionally, community members would also be more than welcome to come to these events.

-Through these events and this information provided, I would hope that people would see the benefits provided to them and really take it for consideration.

## Training Benefits:

-Provided to those interested could be benefits when they are being trained such as lunch or being paid to do so.



## Details

**\$1,000**

### Money

This would just be to pay for meals for those being trade or to provide small payments when doing so.

**ASAP**

### Time

The district is already sending out community partnership articles out to families and this could easily be included.

**Technological Advantages**

### Resources

To do this simply, all the district would need is a way to continue this idea; all that is really needed through this is the support for it.

# Partnerships In Collaboration

## The CCSD

Coordination will need to be made with the CCSD to make these changes. A lot of decisions have to be run by them, but with staff already interested, change can be made.

## Blue Bird Buses

These are the buses that the district uses and cooperation as well as education from them could be beneficial to necessary change.

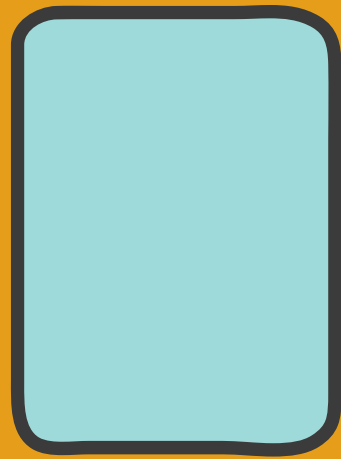
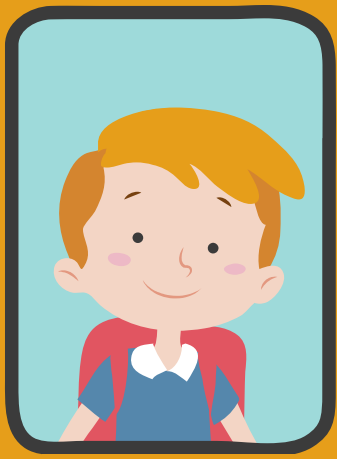
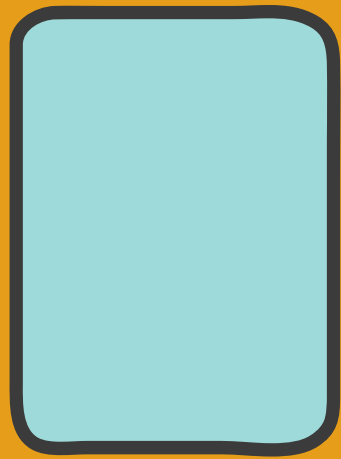
## Nevada State Legislature

A lot of decisions have to be run by our representatives in office as some rules and regulations have been set by and regulated by them.

## Project Recharge/Envirolution

And of course, YOU. This whole project and issue would never had been addressed without the support and attention provided through this program.





**Importance**

# Why Is This Important?

There are many reasons on the value of addressing and finding an end solution to this problem. When the district can implement the solutions presented later in the presentation, these results can be expected and further seen in the future:

**-Student Safety:** Like mentioned previously in the presentation, bus seats are not meant to hold the number of students that they do today. Students are not safe when riding the bus just down the street; those sitting on the edge of the seat falling into aisle with turns. In the case of an accident, those students are not going to be protected at all by the seat technology that is designed for buses because they simply are not on the seat. If students can't get to school safely, there is little explanation as why to go.

**-Staff Stress Reduction:** When we can prioritize this issue and the solutions presented, bus drivers, hopefully, can be able to proceed on their routes without the stress of immediate time crunches like seen. With this students are getting to school on time, regardless of whether a driver is out (as there will be more drivers for substitutes), and teachers will have the full time to teach.

**-Student Education:** Students will be able to focus on their academics more as they will be spending less time getting to and from school everyday. This gives more time for homework and extracurriculars.



# Who Will This Impact?

The entire district will essentially benefit from addressing this issue, but listed below are main examples with explanations:

**-Students:** Students will benefit in many ways from having this addressed:

- **Safer** means of getting **to** and **from school**

- More **time** on **academics**

- Less **Stress**

**-Bus Drivers/Staff:** Like above, there are many different benefits here:

- Reduced **stress** while on **routes**

- Better **support** when **needed**



# How Will This Be Accomplished?

With the basic understanding from everyone, we can better share the knowledge of those around us and what they have to experiences on the daily. When we can stick together and advocate for those who need it, we can see the change being done. We can better support our essential workers. Finally, with your help (with this organization {get the name}, we can get the funds needed to complete what was listed above. We can support a higher education for our students and support those who support our students and their dreams!



# What Will Be Done?

## What?

Stated previously, we will implement solutions like a higher pay or bonuses for bus drivers that can support them and their career further.

## Time

Hopefully, and with your support, this all can be implemented right away. It would be in the highest desires to get these supports out as fast as a possible to better the issue. Since these solutions are funding based, and even change based, once funding is secured, it can immediately go out to the staff.





School Bus Drivers  
and Transportation  
Staff Are Appreciated!